



## Topic: Cancer and Cancer Screening

### 11. All Cancer Deaths

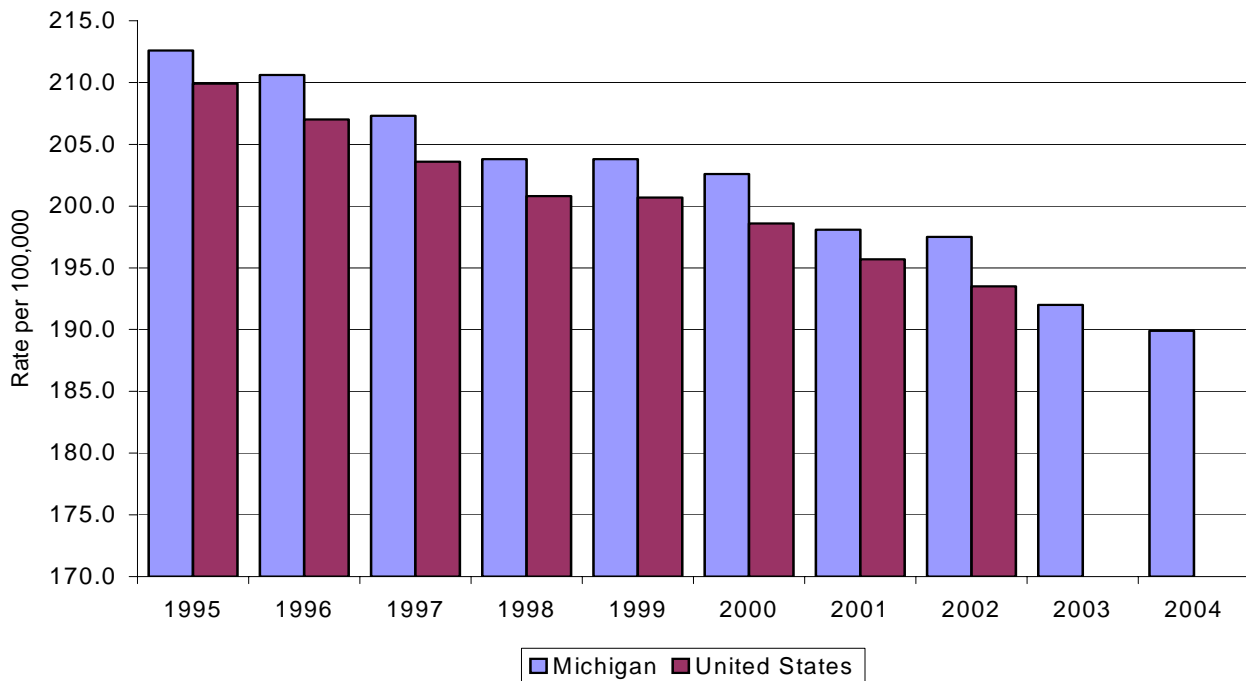
Cancer is the second leading cause of all deaths in Michigan and the leading cause of Years of Potential Life Lost (YPLL) for people below the age of 75. Cancer refers to more than 100 different diseases, each characterized by the uncontrolled growth and spread of abnormal cells. The most common forms of the disease in Michigan are lung cancer, colorectal cancer, breast cancer, and prostate cancer.

#### *How are we doing?*

In 2004, there were 19,654 deaths due to cancer in Michigan, for an age-adjusted rate of 189.9 per 100,000 of the population. Cancer deaths have shown a continuous decline over the past ten years, from a rate of 212.6 per 100,000 residents in 1995.

#### *How Does Michigan compare with the U.S.?*

**Trend in Invasive Cancer Mortality Rates  
Michigan and the United States, 1995-2004**



Michigan's 2002 mortality rate, (197.5 per 100,000) for all types of cancer was higher than the U.S. rate of 193.5 per 100,000.



### ***How are different populations affected?***

In Michigan, 44.4% of cancer deaths occurred among individuals aged 75 or older in 2004. In the same year, individuals aged 50 to 74 years accounted for 48.1% of cancer deaths. Blacks had higher cancer death rates (232.7 per 100,000) in 2004 than Whites, 184.4 per 100,000. The cancer death rate for men (234.0) was nearly 32% higher than the rate for women (160.4). Black men had the highest cancer death rate of 301.8 per 100,000.

### ***What is the Department of Community Health doing to improve this indicator?***

The Department is working to decrease the incidence and impact of cancer by testing a variety of biological and environmental specimens for cancer-related toxins such as PCBs and pesticides. Ongoing surveillance focuses on incidence and mortality of five cancers of public health significance: breast, cervical, colorectal, lung and prostate. Public and professional education programs concentrate on breast, cervical, and prostate cancers. The Michigan Cancer Consortium, a statewide public-private partnership of eighty organizations, is implementing strategies to address its cancer control priorities (<http://www.michigancancer.org>).